

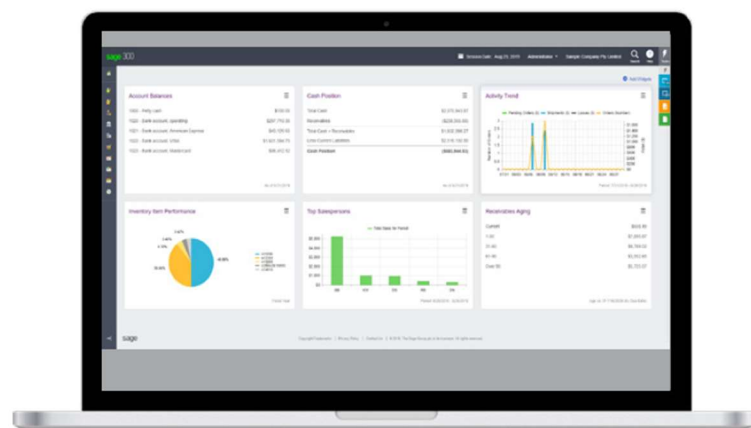
DATASHEET

What's New in Sage 300 2020

Work seamlessly with a single shared set of company data.



Sage 300 2020 makes it easy for you to focus on running your business with increased efficiency and meeting the evolving expectations of today's business world. The latest version offers enhanced user experience through improved web screens, including online help and Sage CRM enhancements.



What's new in 2020.0

Released August 2019



Improved user experience

The enhanced web screens allow you to seamlessly switch between financial, operational, and administrative tasks for multiple companies within a single browser, resulting in increased efficiency. **Payroll Employee Timecards** are also now available in web screens.

Special Characters

With the addition of special characters to web screens, doing business in multiple countries is much simpler than before. Sage 300cloud web screens now support Unicode characters for Chinese, French and Spanish languages.

Quicker access to Sage 300 information from integrated Sage CRM

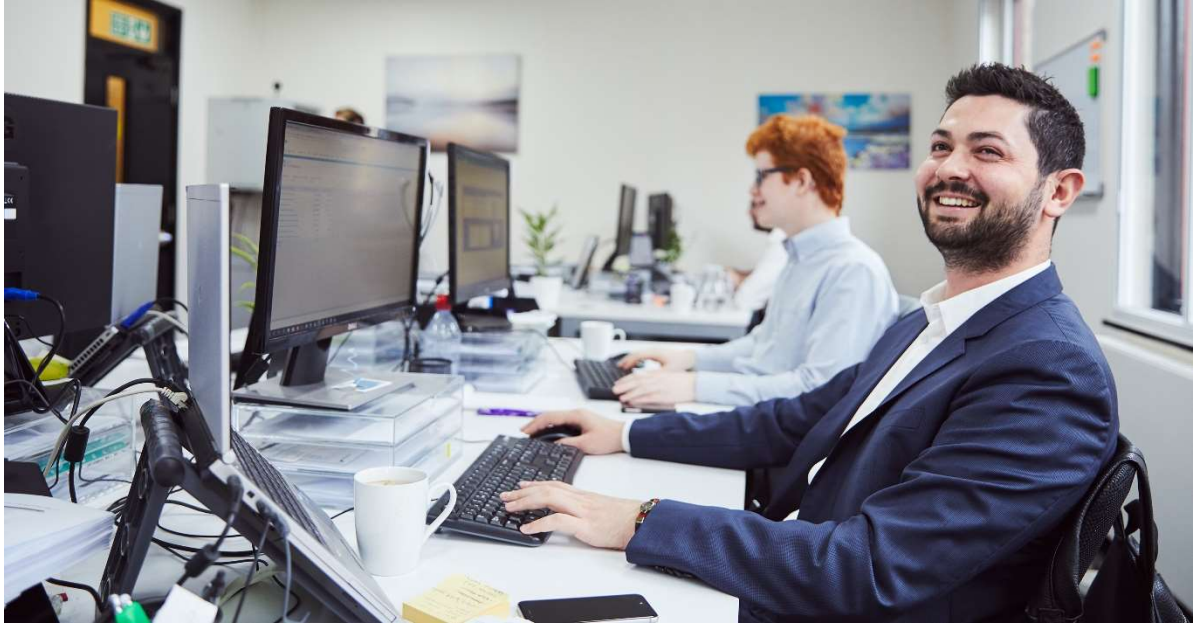
With the enhanced integration for Sage CRM, when you create or change an order entry transaction that is linked to a CRM opportunity, a corresponding communication record is automatically created in Sage CRM.

Online Help

Sage 300 2020 provides new ways to access help information from anywhere, including a new search engine to get you answers quickly.

What's new in 2020.1

Released December 2019



Multiple Contacts Module

Businesses using Sage 300cloud can now create multiple contacts who can receive important forms, invoices, and emails within a vendor or customer account. Previously, Sage 300 allowed only one contact per company.

All New Look

We've refreshed the web screens in Sage 300cloud for a whole new look that is cleaner and more intuitive.

Improved Web SDK and APIs

We made it easier for our ISV partner community to develop and maintain all the add-ons that you love.

Privacy Measures

A companion application called Anonymizer was released for Sage 300. Once created, contacts can be deleted or anonymized based on the company's needs. This helps a company comply with GDPR and CCPA requirements.

What's new in 2020.2

Released April 2020



Bank Feeds

Bank Feeds make it fast and easy to get transactions from your bank and use this data to reconcile with ledgers in Sage 300. This saves time and reduces the risk of error. We include support for over 80 financial institutions in Canada, and over 10,000 in the US!

Printing T5018 Forms

If your company operates in Canada and needs to file T5018 (CPRS) forms, you can now print these on plain paper. Previously, you could print only to official CPRS forms.

General Ledger integration with Tax Services

This feature allows you to enter tax amounts in G/L journal entries. The tax amounts are posted to Tax Services so they appear in the Tax Tracking report, the G/L Batch Listing report, and the G/L Posting Journals report.

Web Screens Updates

- Assign a unique color to each company
- Enter long comments for order details
- Specify BOM numbers on order details

For more information on Sage 300 2020 and how to upgrade, please contact your Sage business partner.