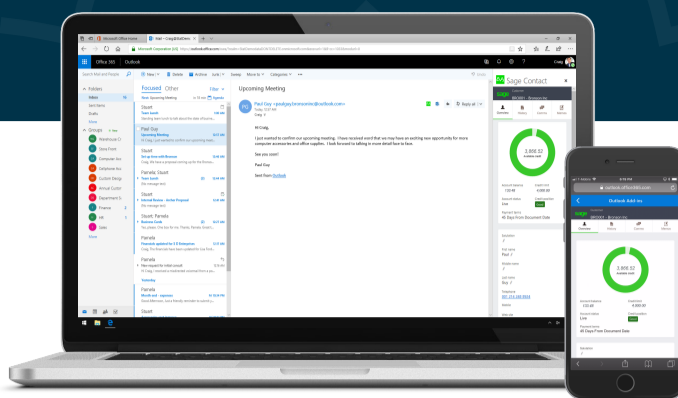


**Sage 300's journey – Keeps getting better!  
Upgrade to the newest version today!**



## 2020

### Productivity Workflows

- Create multiple contacts who can receive important forms, invoices, and emails with a vendor or customer account
- Use online Bank Feeds to reconcile bank accounts
- General Ledger integration with Tax Services



### Continued enhancements to web screens

- All new look for the web UI in 2020.1
- View multiple companies in the same browser
- Employee payroll timecards added to web screens
- Better support for Spanish and French special characters
- Assign a unique color to each company in Sage 300



### Online Help

- Sage 300 users can now easily access help at [help.sage300.com](http://help.sage300.com) wherever they are, so they can quickly return to the task at hand



## 2019



### Business growth and greater productivity with Office 365 and CRM integration

- Seamless integration with Sage CRM for single customer centric view
- Build more rewarding customer relationships, targeted marketing campaigns, and better sales leads
- O365 integration provides contacts, customer and vendors within Outlook
- In addition, information on latest customer account status, credit limit, amount owed etc.



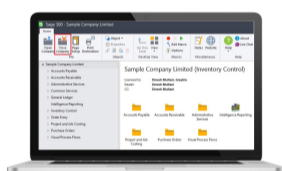
### Improved and modernized technical architecture

- Several older technologies within the Sage 300 architecture were retired and replaced, improving performance, scalability and security



### Efficiency

- Global search utility scans through Sage 300 for best results
- Process project-based AR from AR web screens while on the go



## 2018



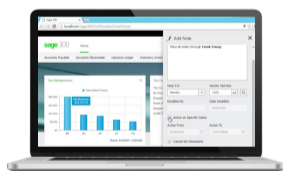
### Save time

- Updated visual process flows to help find information and complete tasks quicker
- View recent windows application list from Sage 300cloud making it easy to find and reopen them quickly
- Improved finder searches



### Improved user interface

- New visual appearance with redesigned buttons
- More visibility to information



## 2017



### Productivity

- New finder searches and allows to quickly view quantity available, committed, on hand, on PO, on sales order for a selected item



### Business transparency & prioritisation

- Create and share notes on customer, vendor or inventory item which will be displayed when creating transactions associated with them; also help track most important issues

## 2016



### 100% mobility

- Web screens - Anytime anywhere and any device access to Sage 300 through browsers
- Intuitive, easy to navigate and allows you to be more productive



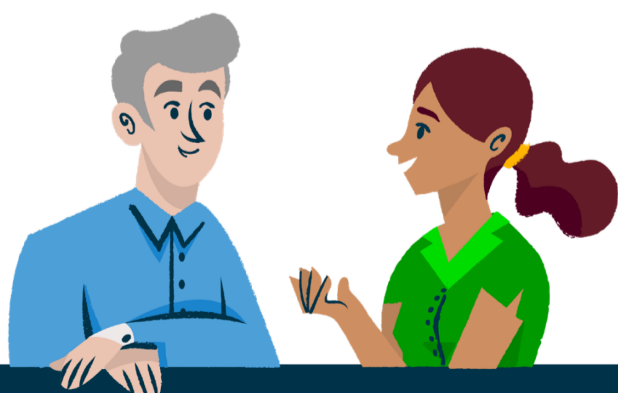
### Save time

- Posting new records from entry screens for GL,AR,AP etc. instead of running an entire batch
- Automatically detect missing accounts from reports and changes to GL



### Better decision making

- Improved financial reporting with Sage Intelligence feature
- Web screens provide customizable widget dashboard for quick view on business KPIs



**For more info, visit: [www.sage.com](http://www.sage.com)**

or contact us at 1-866-996-7243